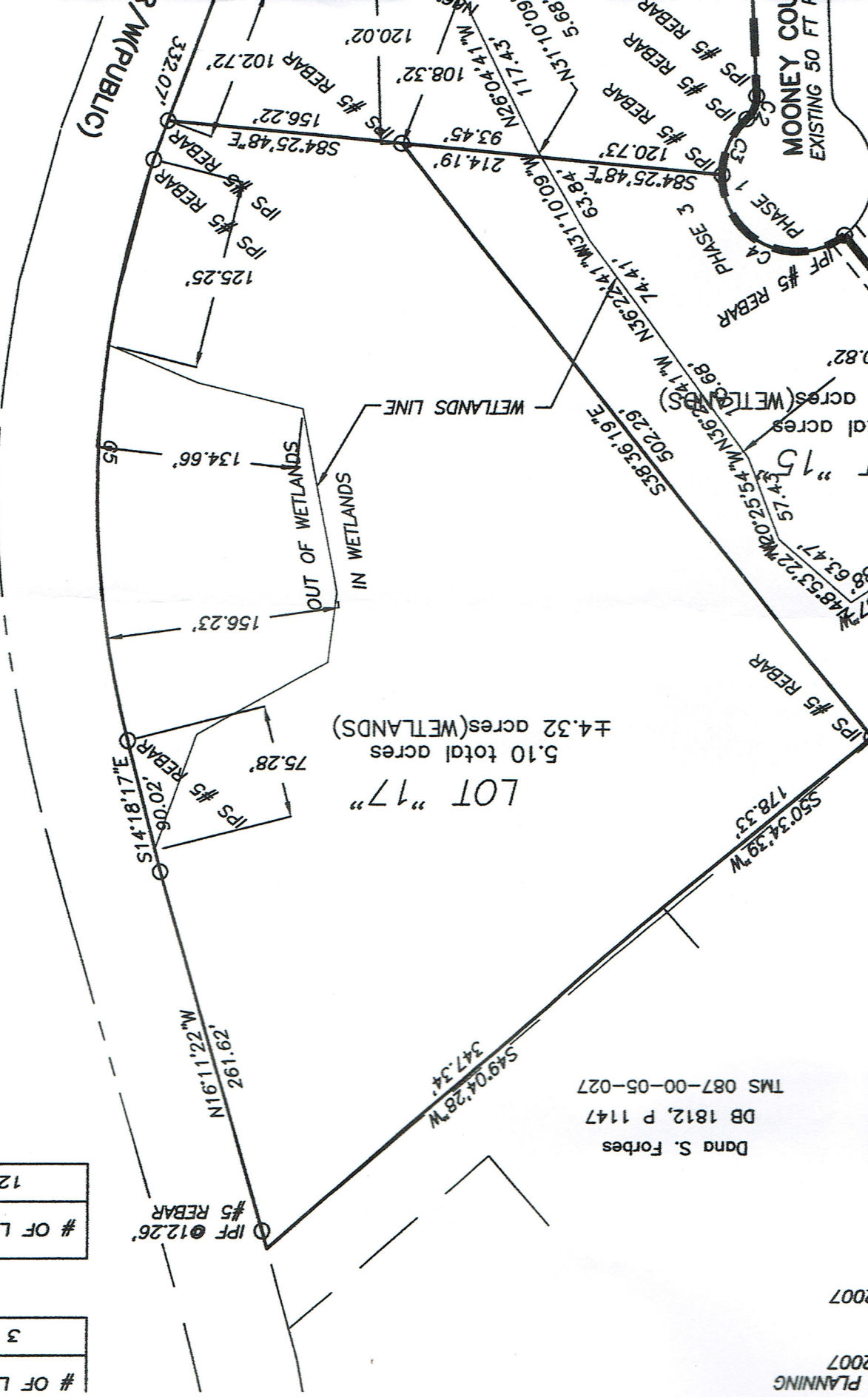


# OF LOTS	3
GROSS DEN	3.05
UNITS/ACRE	

# OF LOTS	12
GROSS DEN	2.43
UNITS/ACRE	

**NOTES:**

1. THIS PROPER PORTION OF DEED 100-03-026. THE PORTION OF PB. THE DESCRIPTION STANDARDS.)
2. A 10' NON-UTILITY EASEMENT EACH LOT.
3. PER HORY C DRAINAGE EASEME ARE TO REMAIN I STRUCTURES AND 4. PER HORY C ACTIVITIES, INCLU OWNERS OR LEAS IN ACCORDANCE MANAGEMENT AND THE SUBDIVISION. 5. FINISHED FLC MINIMUM OF 1 FT OR BACK OF CURF 6. LOTS 15 & 9 THROUGH MOONE SHOWN ON PLAT. 7. WETLANDS LINT 8. P.O.A DOCUM 3216, PAGE 809. 9. The roads are are intended to be responsible fo drainage systems 10. All activities, lot owners or lec carried out in ac Stormwater Mana for the subdivisic 11. All drainage remain free and obstructions. 12. PHASE I IS



Dana S. Forbes  
DB 1812, P 1147  
TMS 087-00-05-027